

# ALPHA CHI OMEGA SORORITY HOUSE

UNIVERSITY OF TENNESSEE, KNOXVILLE



ARCHITECTS  
WEEKS  
AMBROSE  
MCDONALD  
INC.



Regency Georgian Style Architecture

**AWAM** was the Architect of Record and Duane Stone & Associates of Atlanta, Georgia, the Designer for a sorority house in the Morgan Hill Sorority Village. This house is one of 14 sorority houses which replaced the overcrowded Panhellenic Building located in the center of campus. The house is designed in the Regency Georgian style as part of the University guidelines that all the houses be of a “traditional design”. A terrace wraps the back of the house providing an outdoor extension of the Chapter/Dining Room, overlooking the Tennessee River. The 13,076 sf sorority house was completed in 2012 at a total construction cost of \$3,375,454 or \$203/sf.

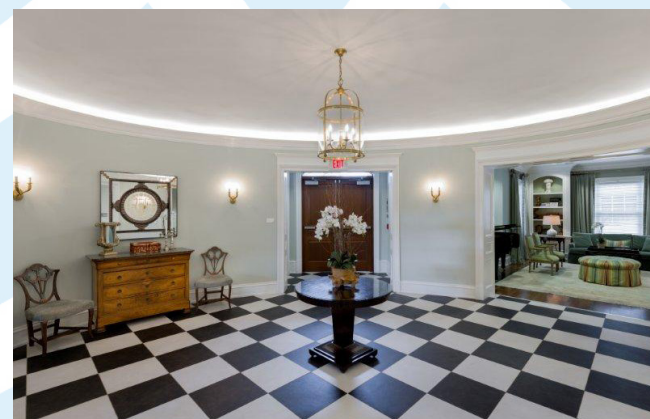


Exterior Rear View

The first floor contains a two story Chapter and Dining room, full service kitchen, informal & formal living rooms and a House Director's suite. The upper two floor contain the 52 beds, plus a library, laundry and bathroom facilities. Basement and attic mechanical spaces house the geothermal mechanical system.

Traditional design elements of queen size brick, portico columns, cornice, divided lite double hung windows and metal & stone trim highlight the exterior of the house. Interior traditional design elements include extensive use of wood moldings, wood and tile flooring and a domed plaster ceiling in the Reception Hall. Many of the bedrooms boast lake views of the Tennessee River.

The house is designed in the Regency Georgian style as part of the University guidelines that all the houses be of a “traditional design.”



Reception Hall



Formal Living Room



Chapter and Dining Room