

UNION COUNTY HIGH SCHOOL

UNION COUNTY SCHOOLS



ARCHITECTS
WEEKS
AMBROSE
MCDONALD
INC.



Front Entry



Agricultural Lab

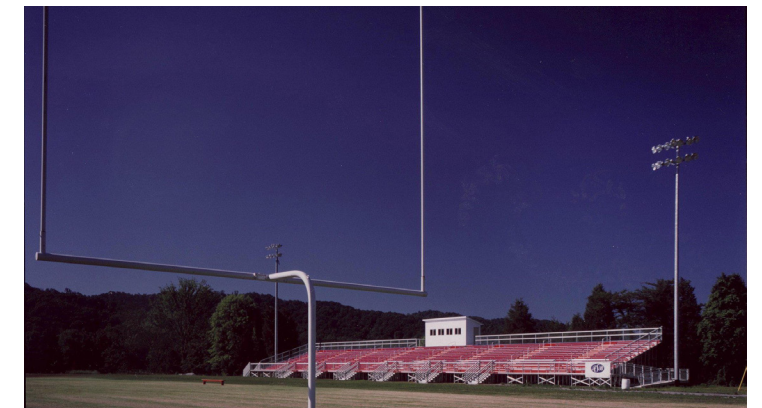
As the only high school and the largest and most modern public building in Union County, this facility was designed to serve numerous community and educational functions.



Gymnasium

As the only high school and the largest and most modern public building in Union County, this facility was designed to serve numerous community and educational functions. Major spaces include a 1,200 seat Auditorium, a 1,600 seat Gymnasium, a Library, and a Commons/Dining area with seating for 300. The major corridors linking each wing intersect at the two-story central Commons adjacent to the administration block and main entry. The majority of the exterior is masonry and custom precast accents, lending scale to the building mass. These elements extend into the interior and are complemented by porcelain tile, glass, steel and acoustical treatment.

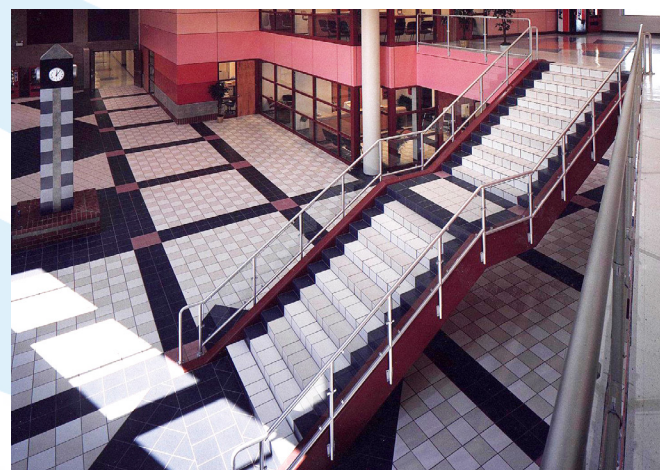
AWAM master planned the 80-acre site around the high school. Vehicular circulation and parking, special event circulation and parking, and bus drop-off and visitor parking are all separated. Other site elements include a greenhouse; 1,600 seat football stadium; football, soccer, baseball and softball facilities and fields; an Adult Education and Alternative School; an athletic facility; and environmental and community parks. The 161,223 sf facility was completed in 1998 for 1,300 students at a construction cost of \$13,176,519, or \$82/sf. The equivalent cost in 2016 is estimated at \$25,795,680, or \$160/sf.



Football Stadium



Band Room



Commons



Auditorium



Auto Shop Classroom Space